

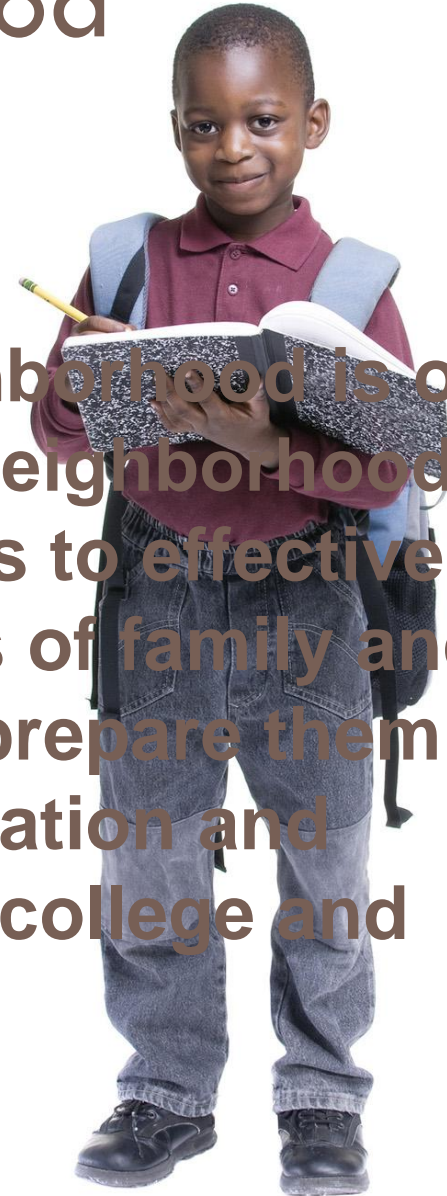
CLEVELAND CENTRAL PROMISE NEIGHBORHOOD PLANNING TEAM LEADERSHIP MEETING

Wednesday, January 12, 2010

The Glidden House

A Promise Neighborhood

The vision of a Promise Neighborhood is one that is a “vibrant, thriving neighborhood where children have access to effective schools and strong systems of family and community support that will prepare them to attain an excellent education and successfully transition to college and career.”



What Is Promise

- A federal initiative of the US Department of Education
- Modeled after the Harlem Children's Zone
- Provides a seamless pipeline of programs, supports and services to ensure academic achievement of children from birth through college and career.

The Pipeline

□ Academic Results

1. Children are ready for kindergarten
2. Students are proficient in core subjects
3. Students successfully transition from middle school to high school
4. Students graduate from high school
5. Students move on to succeed in college and/or career

□ Family & Community Supports

1. Students are healthy
2. Students are safe
3. Students live in stable neighborhoods
4. Students have supportive families and communities
5. Students have access to 21st century learning tools

Our Response to Promise

- Sisters of Charity Foundation and host of partners submitted an application June of 2010
- Developed a collaborative application, with representation from City of Cleveland, Cuyahoga County, Cuyahoga Metropolitan Housing Authority, the Philanthropic and the Central Neighborhood.
- Identified a target zone, Central Promise Neighborhood Zone (E.22nd – E.55th, Woodland to Euclid Ave)
- Aligned Promise application with Choice Neighborhood application

How Did We Fare?

- Raised a local pledged match of \$330,000.00 by time of submission
- Received notification in September.
- Received a composite score of 93 out of a possible 100.
- Ranked 37th out of 339 submissions
- Other winning urban districts scored a 96 or higher.

Post Submission Efforts

- Partners and local community maintained momentum to continue planning w/o Federal support
- SOCF tripled its initial investment
- Invited in November to participate in the **Intensive Learning Partnership**, receiving the same technical assistance and support that the 21 funded communities receive.

Local Planning

- Cleveland Central Promise Neighborhood Advisory Board
 - ▣ Provides direction and oversight to the planning process.
 - ▣ Composition: community leaders, public officials, residents, youth and neighborhood service providers.
- Proposed Planning Structure
 - ▣ Identified a structure, using planning teams to facilitate the development of a final implementation plan
 - ▣ Proposed structure and planning teams work in partnership with CMSD, Invest In Children, MyCom and other systems

“To get through the hardest journey we need take only one step at a time, but we must keep on stepping.”

~Chinese Proverb~

The Vision of the Federal Planning Process

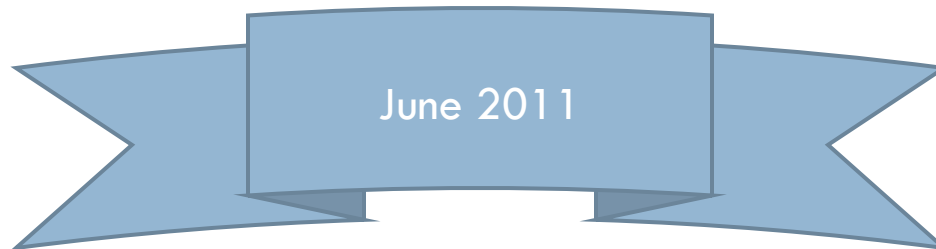
All children growing up in Promise Neighborhoods have access to effective schools and strong systems of family and community support that will prepare them to attain an excellent education and successfully transition to

- What?
 - ALL
 - Access
 - Prepare
 - Attain

- How?
 - Effective
 - Strong
 - Excellent
 - Successfully

The Outcomes of the Planning Process

- A multi- year Implementation Plan
- A comprehensive budget
- A Federal Application to the USDoE
- More Buy-in



Guiding Principles for Implementation Planning

- The CCPN implementation plan will represent **innovative thinking** and solutions that will **make impact** on the children in the CCPN.
- The CCPN implementation plan is **shaped and informed by the data** revealed by the needs assessment.
- The CCPN implementation plan has the **consensus** of relevant stakeholders, including and perhaps most importantly, **Adult residents and youth**.
- Solutions included in the plan will be outcomes and **evidence-based**.
- The plan will be developed collaboratively to ensure a **seamless and integrated continuum** of solutions.
- The plan will build upon **assets** currently **existing** in the CCPN and in Cuyahoga County.
- The planning process will focus on **sustainability** and **long-term impact**.

Planning Resources Available

- Human Capital
- Financial Resources
- Promise Intensive Learning Partnership
 - ▣ Policy Link, Harlem Children's Zone, Center for the Study of Social Policy
- Information Gatherers
- UNCA

Planning Structure

- Based on the Harlem Children's Zone model of an integrated continuum:



Content Planning Teams

- Five Content Planning Teams:
 - ▣ Early Childhood (birth-age 5)
 - ▣ Wrap-Around model in CMSD partner preK-8 schools (students preK-8)
 - ▣ STEM model in CMSD partner K-8 school (students K-8)
 - ▣ High School (students grades 9-12 who live in the CCPN)
 - ▣ College/Career (youth aged 12 and older)

Content Planning Teams

□ Academic Results:

- Children are ready for kindergarten
- Students are proficient in the core subjects
- Students successfully transition from middle school to high school
- Students graduate from high school
- Students move on to succeed in college and/or careers

□ Family and Community Results:

- Students are healthy
- Students feel safe
- Students live in stable communities
- Students have supportive families and communities
- Students have access to 21st century learning tools

Content Planning Teams

Content Planning Team	Target Population	Academic Result	Family and Community Results
Early Childhood	birth through age five	Children are ready for kindergarten	Each content planning team must propose solutions to achieve the family and community results for its respective target population: Students are healthy; Students feel safe; Students live in stable communities; Students have supportive families and communities; Students have access to 21st century learning tools.
Wrap-Around model in CMSD partner preK-8 schools	students in CMSD partner preK-8 schools*	1) Students are proficient in core subjects; 2) students successfully transition from middle school to high school	
STEM model in CMSD partner K-8 school	students in CMSD partner K-8 school**	1) Students are proficient in core subjects; 2) students successfully transition from middle school to high school	
High School (MYCOM)	students grades 9-12 in the CCPN	Students graduate from high school	
College/Career	youth aged 12 and up in the CCPN	Student move on to succeed in college and/or careers	
	*Marion Sterling Elementary and Carl and		
	**George Washington Carver		

Support Teams

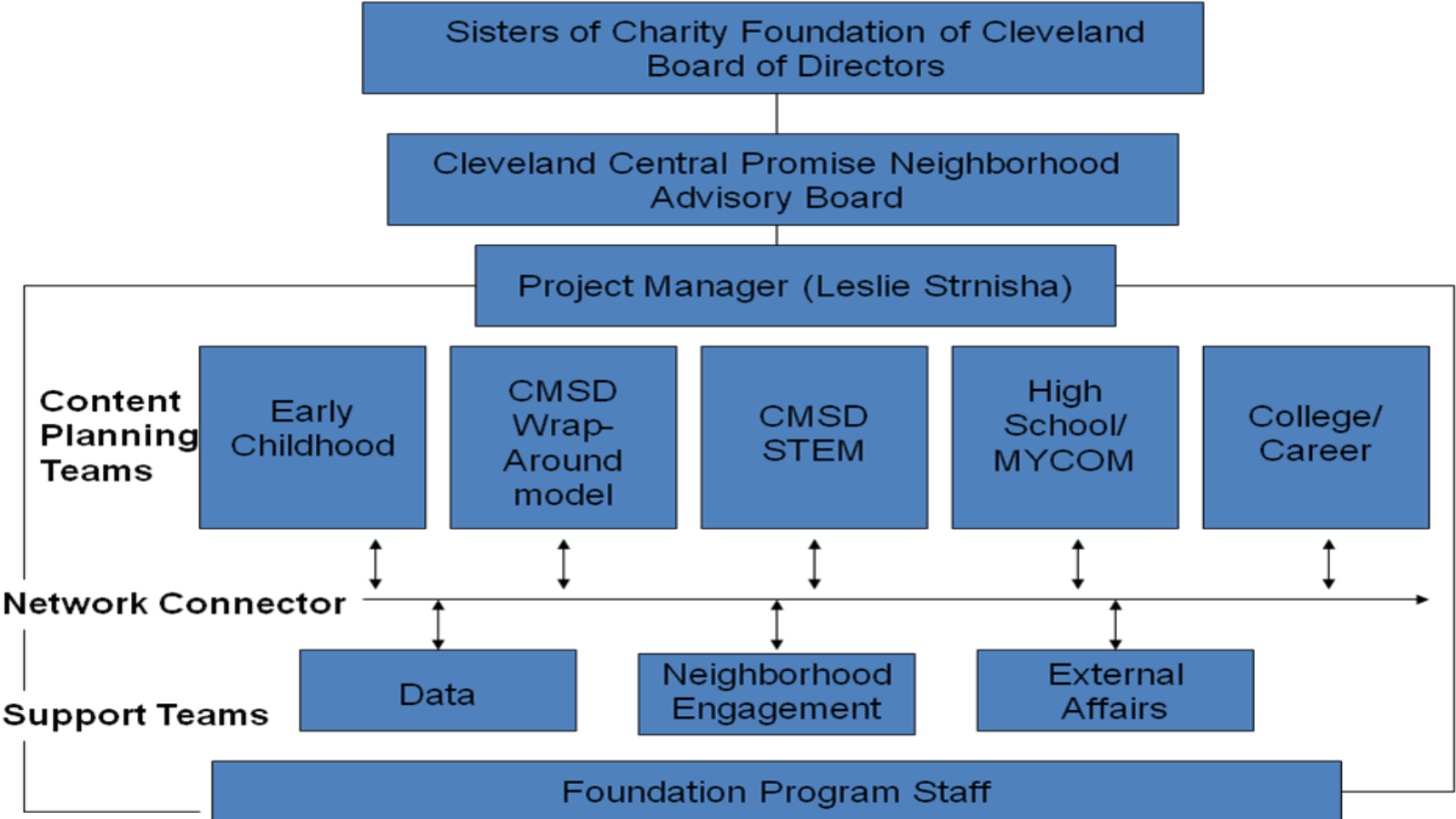
- Three Support Teams
 - Data Team
 - Neighborhood Engagement
 - External Affairs

Proposed Planning Structure

Team	Team Leader	SOCF Staff	Consultant expertise
Early Childhood	Marcia Egbert/TBD	Teleange Thomas	TBD by team leader
PreK-8 CMSD Wrap Around	Lisa Baskin/CMSD Design Team	Adriennie Hatten	Laura Weeldreyer
K-8 CMSD STEM	Lisa Baskin/CMSD Design Team	Adriennie Hatten	TBD by team leader
High School (MYCOM)	Ken Hale/Lisa Bottoms	Adriennie Hatten	Laura Weeldreyer
College/Career	Lee Freidman/TBD	Teleange Thomas	TBD by team leader
Data	Claudia Coulton/TBD	Leslie Strnisha	Federal Reserve Bank/Social Solutions
Neighborhood Engagement	Don Slocum/TBD	Teleange Thomas	Bill Traynor
External Affairs	TBD	Joan Mazzolini/ Susanna Krey	TBD by team leader

Relational Chart

Cleveland Central Promise Neighborhood Planning Effort Relational Chart

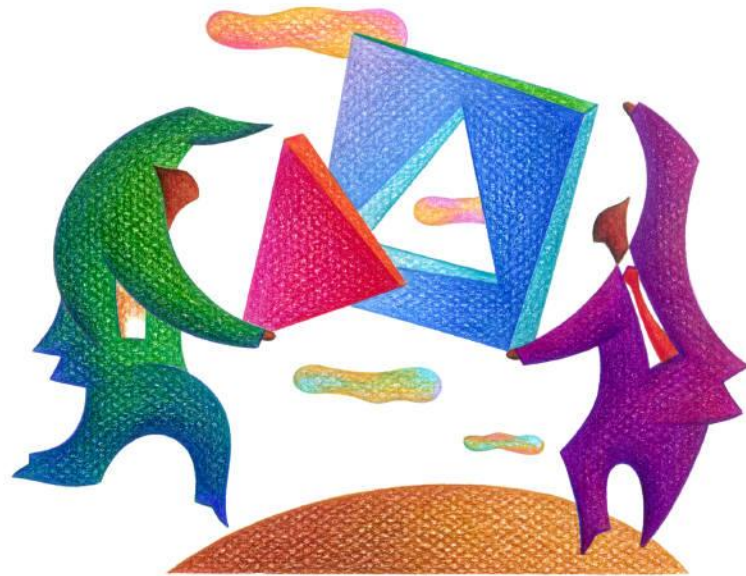




CCPN Planning Process

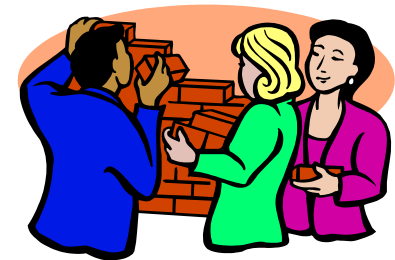
Planning for Solutions

- 36 Individual Solutions
- Address Academic and Family/Community Support Indicators



Team Composition

- Who's On Your Team?
- BRAINSTORM
- How Often Should Teams Meet?

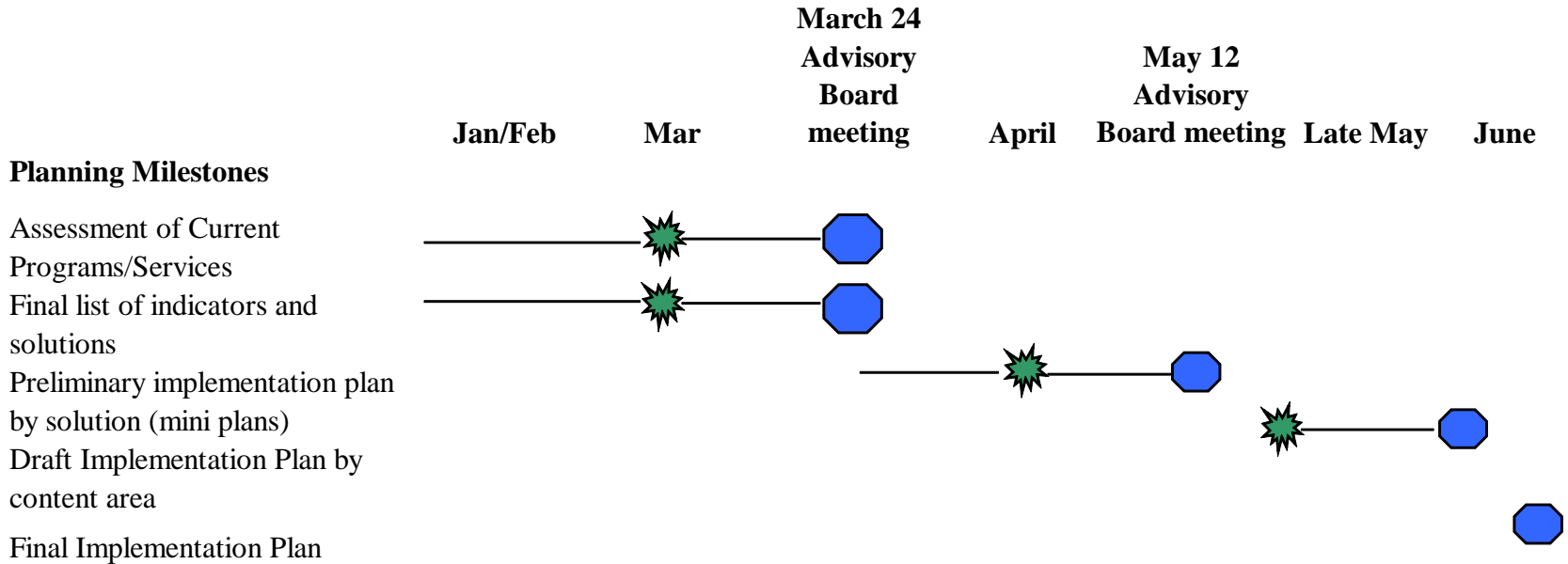


Key Deliverables

- Review of Indicators and Solutions
- Review of Current Program/Service Inventory
- Plans for Individual Solutions
- Plan for the Content Area + Related Community Supports

Planning Milestones and Timeline

PROPOSED PLANNING TIMELINE



Community Input



Advisory Board Input

Team Leader meetings

- Monthly meetings
- Friday's at 1 pm
- Opportunity to update other team leaders about your team's progress, challenges, potential areas for greater collaboration or interaction
- Meeting dates behind Tab 4 in handbook

PLANNING BUDGET

- What Resources do you need to Support Planning Activities?



Community Engagement

- ❑ RESIDENTS, Including YOUTH
- ❑ Community Providers, including Potential Partners
- ❑ Business and Civic Community
- ❑ Greater Cleveland Community



THE BLOG

www.clevelandpromiseneighborhood.org

